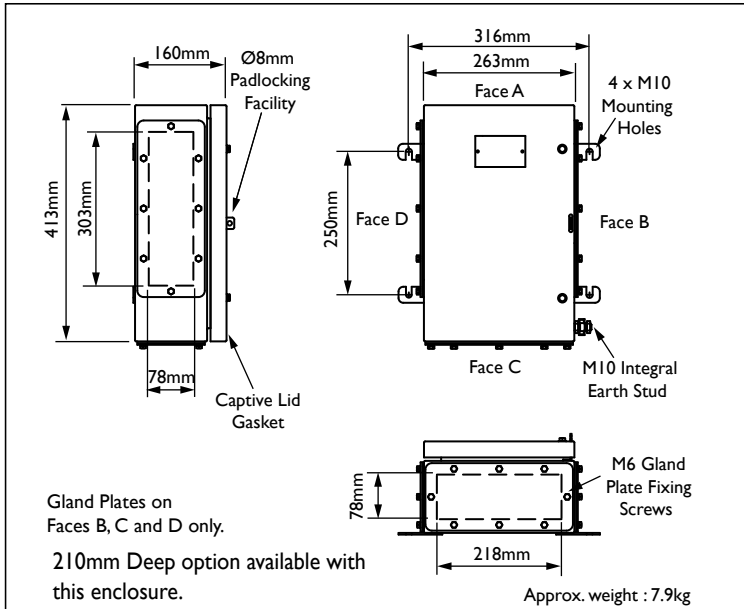




# Enclosure Type Stainless Steel Size 3

Increased Safety EExe

S Series Stainless Steel Enclosures



## Technical Data

- Increased Safety EExe.  $\text{Ex II 2 GD EExe II}$ .
- SIZE 3 BASEEFA Certificate No. BAS 01 ATEX 2106X.
- ZSIZE 3 BASEEFA Certificate No. BAS 01 ATEX 2105U.
- Suitable for use in Zone 1, Zone 2, Zone 21 & Zone 22.
- Construction and test standards EN 50014, EN 50019 and EN 50281-1-1. IEC 60079-0 and IEC 60079-7.
- IP66 ingress protection to IEC 60529 and EN 60529.
- DTS01 deluge protection witnessed by EECS.
- Operating temperature range -40°C to +80°C.
- Temperature Class and Ambient T6 40°C. Optional T5 with ambients up to 65°C.
- Assembly instruction data sheet No. A.I. 266. For SIZE 3.
- Assembly instruction data sheet No. A.I. 267. For ZSIZE 3.
- 210mm deep option available.
- Alternative Certification Options Available.

- Exe II.
- AExe II/Exe II.

For full Technical Specification see page 35.

## MAXIMUM QUANTITY OF ENTRIES PER FACE

Thread Size	M16	M20/O	M20/A	M25	M32	M40	M50
Bottom Face C Quantity	17 #	17 #	12	6	4	3	2*
Side Faces B & D Quantity	23 #	23 #	16	8	5	4	3*

# Serrated Washers/Locknuts with large outside diameters may foul on adjacent glands.

\* Serrated Washers/Locknuts must not foul on aperture wall.

**Note:** For Cable Entry Positions see pages 32 - 33.

## TERMINAL CAPACITY DATA

Terminal Type	Conductor Size (mm <sup>2</sup> )		Max. Volts	Max. Physical Terminal Content		Reduced Terminal Content at Max. Terminal Amps	
	Min.	Max.		Terminal Quantity	Amps	Terminal Quantity	Amps
WDU 2.5	0.5	2.5	550	112	7	13	21
WDU 4	0.5	4	750	94	10	12	28
WDU 6	0.5	6	550	72	14	10	36
WDU 10	1.5	10	550	56	20	9	50
WDU 16	1.5	16	550	48	27	8	66
WDU 35	2.5	35	750	36	47	6	109
WDU 70N	10	70	750	14	94	4	167
WFF 35	2.5	35	1100	11	83	6	109

**Notes:**  For Junction Box Wattage Factor & Combined Terminal Resistance see pages 37 - 39.

The box is supplied with an integral internal/external earth stud assembly.

WFF terminals are supplied fitted with cover.